

A world where you belong



From your neck to your toes, feel all the aches and pains drift away. Enjoy a stress-free world you'll want to return to, again and again.

Find the Earth Spa designed for you.
Feel the difference. Experience something new.





Experience True Hydrotherapy



and the Benefits it Delivers



NECK & SHOULDER



BACK & LUMBAR



HIP & THIGH



CARPAL TUNNEL



CALVES



FOOT BLASTER



With the simple touch of your smart control pad, select the Advanced Flow Hydrotherapy setting that's right for you. From a relaxing and deeply soothing massage to a powerful and intense full hydrotherapy session across your entire body, it's a hydrotherapy experience you'll want to return to, again and again.





Standard Features to Enhance your Experience



EASY ENTRY STEP



EARTHSMART
CONTROL PANEL



DEEP BLUE SOUNDS



SILENT LAMINAR
WATER FEATURE



SPECTRA LIGHTS™



OZONE SANITATION
SYSTEM



Beyond your Expectation



When you choose Earth Spas, you'll be comforted knowing we've loaded each one with incredible features whilst keeping your price affordable. This means, from the moment you step in, the experience will be absorbing and deeply satisfying. Whether it's listening to the trickle of the 3-way Silent Laminar Water Feature, enjoying the soft blast of bubbles on your neck muscles, or being captivated by the stunning colors of the Spectra Lights.™



KERN RIVER



91" x 91" x 37"
Ideal for large families



6
SEATS



90
JETS

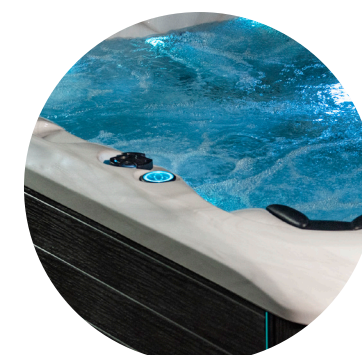


240v
60A

Now Available!
Contact your local dealer for more information.



HA LONG BAY



91" x 91" x 36"
Ideal for large families / entertaining



5
SEATS



76
JETS



240v
60A

To view the full specification:





MARIANA



85" x 85" x 36"
Spacious luxury single lounge spa

 **6**
SEATS

 **55**
JETS

 **240v**
50A

To view the full specification:




GLENCOE



85" x 85" x 36"
Unrivalled all seater spa

 **7**
SEATS

 **66**
JETS

 **240v**
50A

To view the full specification:




EREBUS



79" x 79" x 34"
Spacious luxury single lounge spa

 **5**
SEATS

 **28**
JETS

 **240v**
50A

To view the full specification:





EREBUS II



79" x 79" x 34"
Spacious luxury single lounge spa

 **5**
SEATS

 **39**
JETS

 **240v**
50A


To view the full specification:



ULURU



79" x 79" x 34"
Compact dual lounge spa

 **4**
SEATS

 **28**
JETS

 **240v**
50A


To view the full specification:




ULURU II



79" x 79" x 34"
Compact dual lounge spa

 **4**
SEATS

 **39**
JETS

 **240v**
50A

To view the full specification:




KOURI



85" x 67" x 34"
Intimate dual lounge spa

 **3**
SEATS

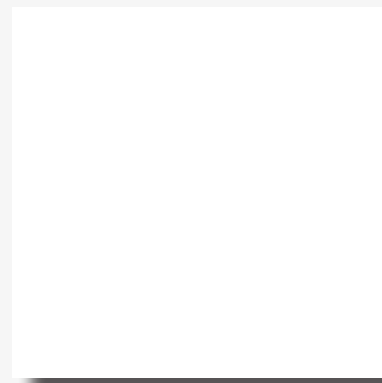
 **31**
JETS

 **240v**
50A

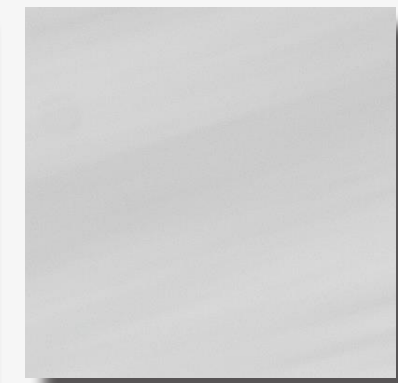
To view the full specification:



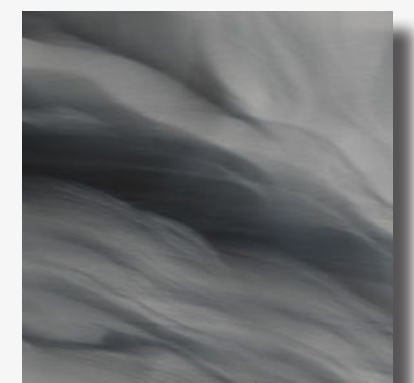
Color Combinations for Every Style



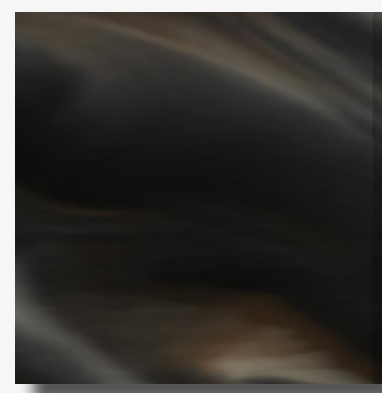
Pure White *



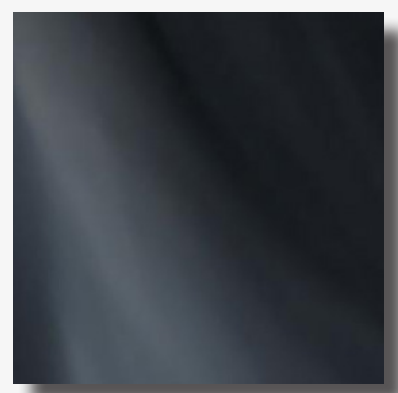
Sterling Silver



Odyssey



Espresso



Pearl Shadow

* Available on select models only.





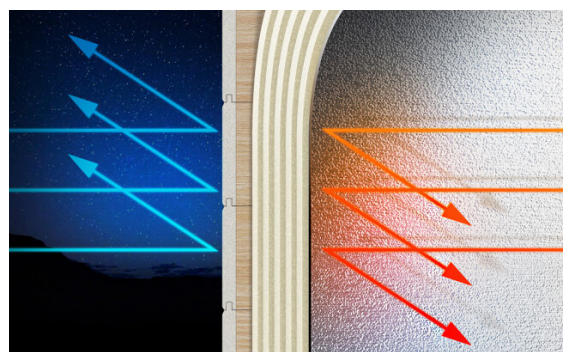
Energy Efficiency Means



Efficiency in heating, cooling and saving money

Committed to improving the wellbeing of people and the health of our planet, Earth Spas is proud to be at the forefront of energy efficient hot tub design and manufacturing. The range has been developed through a vision of being both ergonomically and environmentally friendly. So, when you choose Earth Spas, the world benefits too.

To optimize energy efficiency, all Earth Spas are equipped with reflective, triple-layered foam insulation packed on all sides and corners, as well as the base of the spa. The cabinet is also lightweight and interlocking, aiding in stopping energy heat loss while maximizing performance and sustainability.



All Earth Spas are Eco Smart73 ready, so you can upgrade and save up to 73% on running costs. It also helps save the environment too. The ASHP is an intelligent energy solution requiring remarkably little energy—just 0.9Kw—in order to produce 5Kw, which is enough to heat and cool your spa, year-round.

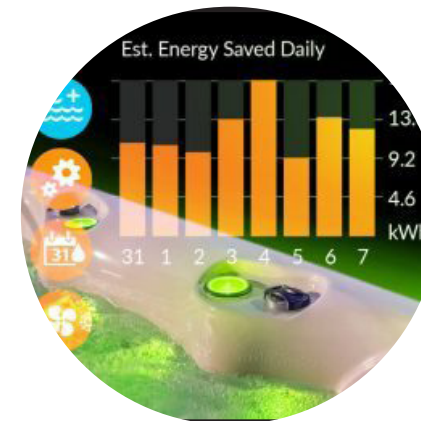


Wellbeing for Planet Earth too



ECO-FRIENDLY SOLUTION

The latest air source heat pump uses the most environmentally friendly R32 refrigerant, reducing the amount of power used in the smartest way. Compared to a standard electrical fitting, this system allows you to save up to 73% in energy costs.



SMART CONTROLS

With 6 different modes that not only heat but also cool your spa, you can relax in perfect spa temperatures, no matter the weather. The smart modes also make sure your spa is working in the most intelligent way to help optimize your savings.



EASY TO INSTALL

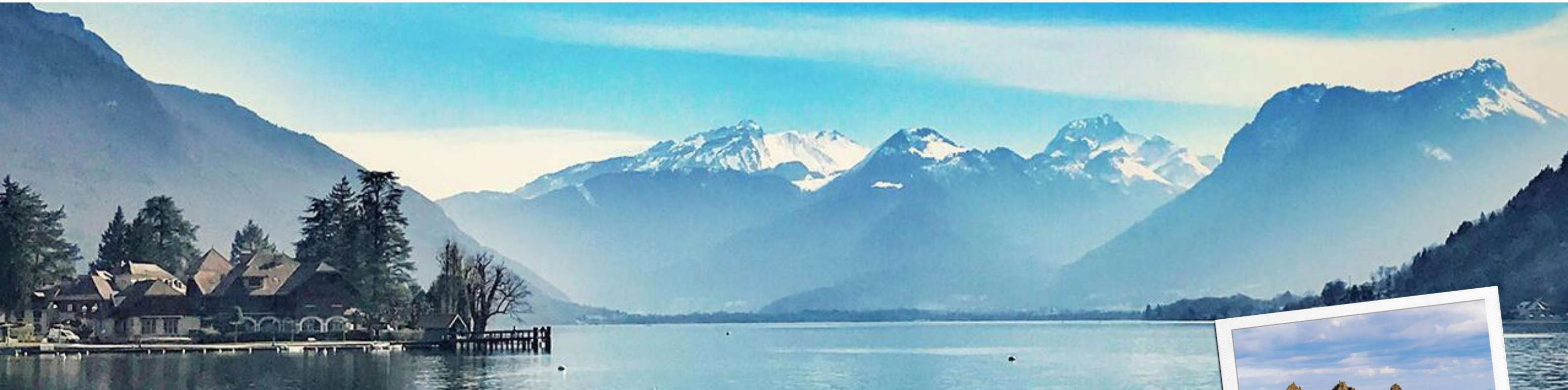
Eco Smart73 is a fully integrated system and a plug-and-play solution. Being more eco-friendly has never been easier. There's no need for additional power circuits. Everything is simple to operate, right from your EarthSmart Control Panel.



Designed for the World



Inspired by Great Natural Landmarks



CREATED WITH FEELING

Every curve, contour, and angle is defined from our intimate understanding of what you—our customers—want to feel every time you sit in one of our remarkable spas. It's ergonomic design, in its ultimate form.



ERGONOMIC DESIGN

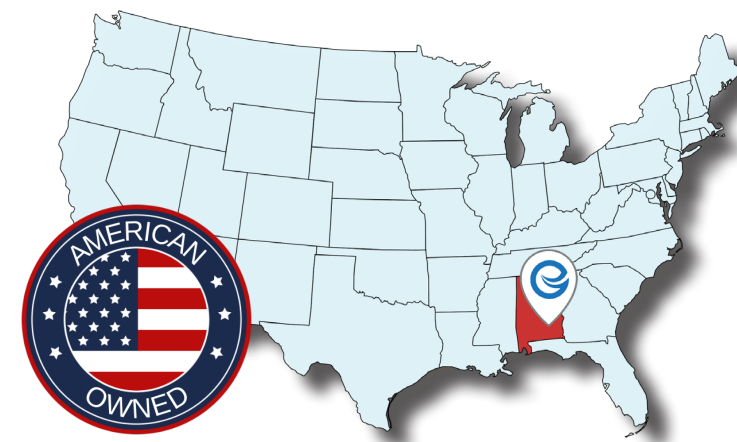
Designed with expertise and passion for improving the world we live in. Our hot tubs provide an invigorating, revitalising experience and offer therapeutic benefits for the whole body.



UNPARALLED QUALITY

All spas are manufactured and assembled with meticulous precision. The best materials and components are sourced from world-leading suppliers, whose standards of excellence—both technologically and ethically—are respected industry-wide.

From Mount Erebus in the Antarctic to Uluru in Australia... At Earth Spas, we take our inspiration from the natural wonders and landmarks around our beautiful world. Whether you're relaxing in Ha Long Bay or unwinding in Kouri, let Earth Spas Advanced Flow Hydrotherapy jets soothe and ease away any stress and strains.



Earth Spas is proudly based in Dothan, Alabama, where we carefully distribute our products. Our hot tubs are designed to be among the most ergonomic and environmentally friendly on the market, offering unparalleled comfort and setting a new standard in wellness and sustainability.



Uncompromising Quality and Excellence



PERFORMANCE

Earth Spas are built to exceed expectation. With quality Gecko parts, the spas use one of the best renowned brands for its main components. Add in reflective foam insulation and enhanced features that come at no additional cost, Earth Spas gives you an unforgettable experience, at the highest level



DURABILITY

All Earth Spas shells are produced using Rapid Form™ technology. This environmentally friendly shell solution decreases manufacturing times, greatly reducing energy usage and the impact on our environment. It is chemical, stain, UV, and weather-resistant too. The acrylic surface finish stays bright and true to color, even after many years of use.



RELIABILITY

Earth Spas are not only renowned for their exceptional reliability, but we also take pride in growing a hand-picked network of reliable retailers. This combination of top-tier products and a dependable retail network guarantees a seamless and satisfying experience from selection to installation.



Extensive Warranty to Keep you Relaxed

SPA STRUCTURE & SHELL SURFACE WARRANTY

10-years structural warranty:

The manufacturer warrants the stainless steel structure of the spa against defects in workmanship or materials for a period of ten years from date of delivery subject to the limitations and conditions expressed in this warranty.

5-years warranty on the acrylic shell structure:

The shell will maintain its structural integrity and configuration and will be free of any water loss due to a defect in the spa shell.

5-years warranty on the shell surface of the spa:

The manufacturer provides a five-year warranty against blistering, cracking and delamination.

SPA PLUMBING & COMPONENT WARRANTY

3-years warranty on spa control box & display module:

The manufacturer warrants the display and the spa control box against defects in the materials and workmanship or any defect for three years. This is with the exception of fuses, bulbs and gaskets which are deemed as perishable and replaceable items.

3-years warranty on spa electrical heater:

The manufacturer warrants the heater against defects in materials and workmanship for a period of three years from date of delivery. This warranty is limited to the supply of replacement parts. This warranty does not cover damage to heaters caused by an incorrect water balance resulting in the heater being subjected to abrasive/acidic water.

3-years warranty on spa heat pump:

The manufacturer warrants the heater against defects in materials and workmanship for a period of three years from date of delivery. This warranty is limited to the supply of replacement parts. This warranty does not cover damage to heaters caused by an incorrect water balance resulting in the heater being subjected to abrasive/acidic water.

3-years warranty on spa pumps:

The manufacturer warrants the spa water pumps against defects in materials and workmanship for a period of three years from date of delivery. Sudden and consistent water loss must be reported to the seller as soon as possible. Damage to the pump motor caused by a pump leaking for an extended period without notifying the seller will not be covered under this warranty.

3-years internal plumbing warranty:

The manufacturer warrants the plumbing, piping and plumbing joints against defects in materials and workmanship for a period of three years from the date of delivery.

1-year warranty on other electrical items:

The manufacturer warrants the factory installed Bluetooth music module, speakers, amplifier and sub-woofer, spa ozone module, the LED light assemblies, which consists of all lights within the spa, including the main light and lighting of any water feature, to be free from defects in materials and workmanship for one year.

SPA FURNISHINGS & PLASTICS WARRANTY

2-years warranty on spa jet internals:

The manufacturer warrants jet internals to be free of manufacturing defects for a period of two years from date of delivery. This warranty excludes bearings damaged by grit, sand and improper water chemistry causing corrosion of the part and is limited to the supply of replacement parts after the faulty part has been returned to the manufacturer for warranty inspection.

1-year warranty on plastic control parts:

The manufacturer warrants the plastic control parts such as diverters and air controllers against defects in materials and workmanship for a period of one year from the date of delivery. This warranty excludes damage by grit, sand and improper water chemistry causing corrosion of the part and is limited to the supply of replacement parts after the faulty part has been returned to the manufacturer for warranty inspection.

1-year warranty on THERMOCLAD cabinet & spa step:

The manufacturer warrants the THERMOCLAD spa cabinet and step against defects in materials and workmanship for a period of one year from the date of delivery. This warranty specifically covers the structural integrity of the cabinet, namely peeling, splitting, cracking, warping. The THERMOCLAD spa cabinet and step finish is warranted to be free from defects in materials and workmanship at the time of initial delivery. Fading and weathering of the surface will occur naturally over time and are not considered defects.

1-year spa hardcover warranty:

The manufacturer warrants the SPA hardcover against defects in materials and workmanship for a period of one year from the date of delivery. This warranty applies only to the structural integrity of the cover and the vinyl. Damage caused to stitching, straps or locks due to improper use of the cover will not be covered under warranty. Disposal of any cover replaced under warranty will be the owner's responsibility.

90-days warranty on all other fixtures and furnishings:

The manufacturer warrants all other parts not previously mentioned for 90 days from the date of delivery. This applies to items such as filter housing, topside display sticker. Items that can be replaced without the use of a tool such as filter cartridges, filter lid, spa pillows, cover locks etc. are not included in the warranty but are warranted to be free from defects in materials and workmanship at the time of delivery.

***Warranty limitations apply. To see the full, comprehensive warranty, contact your local dealer or visit www.earthspas.com/warranty**



earthspas.com

NOV 24